

'High performance, energy efficient portable cooling solutions for today's environmentally conscious market'

The most powerful water cooled split on the market, the Mighty Cool MCS_e14.6 takes everything the MCS_e7.3 has to offer then doubles it. Offering a massive 14.6kW cooling duty, powerful EC fan technology and low GWP refrigerant which combine to deliver cool air with maximum efficiency and minimum environmental impact, the MCS_e 14.6 is the perfect choice when large volumes of cooling are required.

As with the MCS_e7.3 the MCS_e14.6 doesn't require any ducting and the main unit can be sited up to 35M from the outdoor section allowing it to be sited deep within a building. Heavy duty lockable castors on both indoor and outdoor sections allow them to be easily moved into place while the strong steel case ensure it's up to daily site use and perfect for hire fleets.

Fully controllable via variable fan speed and a digital thermostat the MCS_e14.6 can be tailored to suit any application and is ideal for data centres, factories, storage warehouses, events and other large scale cooling jobs.

MCS_e and MCS_e Range overview

- Massive duties: 6kW to 14.6kW of cooling
- EC fans: Greater efficiency, better performance and fully controllable
- Backward curved impellers: Generate much higher pressure than axial fans so can be used to push air further and through smaller diameter ducting
- Digital thermostatic control: More accurate performance
- High performance, energy efficient cooling solutions for today's environmentally conscious market

MCS_e14.6 specifications

- Nominal duty 14.6kW
- Nominal running current 22A
- Digital Thermostatic control
- Max Umbilical length 35m
- Lockable castors
- High efficiency EC fan technology
- Main Unit Airflow (max) 2,200m³
- Heat Exchanger Airflow (max) 6,200m³
- Ideal for server rooms and data centres
- Supply 32A 230v
- Weight Indoor Unit 160kg (wet)
- Weight Heat Exchanger 47.6kg (wet)
- Dimensions 1834x819x451mm
- Operating range 15°C-35°C
- IP Rating (Indoor/Outdoor) IP2X/IP24
- Noise (Indoor/Outdoor) 65/65dB
- Max Water Temp 60c



The all new MCS_e14.6

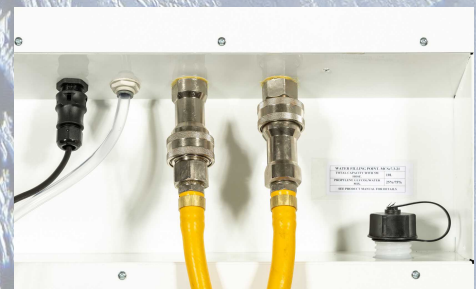


Did you know?

The MCS_e range uses R454C, a low GWP (Global Warming Potential) refrigerant that's 95% less harmful to the environment than some traditional refrigerants. Not only that, but as it's A2L rated neither does it have the flammability issues associated with other low GWP refrigerants such as R290 (Propane) either.



Digital thermostat allows for simple yet effective operation



Easy to install 3/4" umbilical lines with standard push fit BSPP fittings

Powerful heat exchanger



The easy to install heat exchanger is fully portable



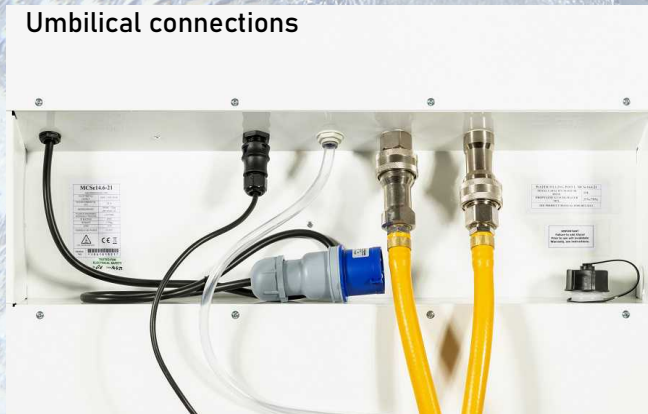
The MCSe14.6 Water Cooled Split Industrial Portable Air Conditioner



Easy to use controls



Umbilical connections



Call us on 01527 830610 or visit www.broughtoneap.co.uk

As Broughton strive to manufacture to the highest standards we reserve the right to alter specification without prior notice