

# **IFH 2 Industrial 1.5kW 110v 16A Portable Electric Fan Heater**



**PLEASE ENSURE YOU HAVE READ AND UNDERSTOOD  
THESE INSTRUCTIONS FULLY BEFORE ATTEMPTING TO  
OPERATE THIS EQUIPMENT.**

## **INITIAL STARTUP**

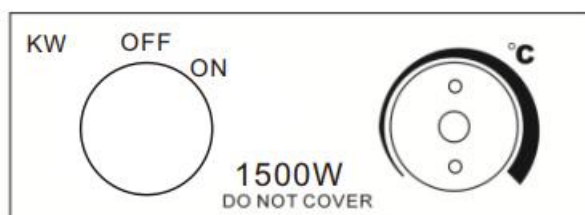
**1.1** The IFH2 is an electric fan heater, and is ideal for areas where a 16A 110v supply is present. It is supplied with a min/max mounted thermostat and a self-reset thermostat, which will switch off the heater in the event of overheating for safety

**1.2** When using the heater for the first time, you may notice a slight emission of smoke. This is normal and it will stop after a short time. The heating element is made of stainless steel and coated with protection oil. This will dissipate in a few minutes

## **TECHNICAL SPECIFICATIONS**

Model	IFH2
Voltage	110V 50Hz
IP	IP2X
required power	1500W
current	13.63A
Setting	0/1500W
Size of heater ( mm)	240*220*320
N.W.( KG)	3. 6

## **CONTROL PANEL**



1. Function selector with two power settings
2. Min – Max thermostat dial

## **GENERAL SAFETY**

**4.1 Warning : In order to avoid overheating, please DO NOT COVER the heater during operation .**

4.2 When using electrical appliances, basic precautions should always be followed including :

4.2.1 The fan heater is not suitable for use outdoor areas in damp weather, in bathrooms or in any other wet or damp environments.

4.2.2 Please note that the fan heater can become very hot and should, therefore be placed at a safe distance from flammable objects such as furniture and other flammable materials

4.2.3 Never cover the fan heater.

4.2.4 Never place the fan heater immediately under a wall socket.

4.2.5 Never connect the fan heater using an on/off timer or any other equipment which can automatically switch the device on.

4.2.6 The fan heater must never be placed in rooms where flammable liquids or gases are used or stored.

4.2.7 If an extension cord is used, it must be as short as possible and always be fully extended, as well as suitably rated for the voltage and current of the unit.

4.2.8 Never connect other appliances to the same mains socket as the fan heater.

4.2.9 Do not use in bathrooms, wet rooms or any area where water is present.

4.2.10 If the power cord of heater was damaged, it must be repaired by manufacturer or qualified electrician.

4.2.11 Ensure heater is always operated under supervision.

4.2.12 Do not place the appliance on moving vehicles or where it can be easily knocked over.

4.2.13 When the heater is not in use, always unplug the heater

4.2.14 Always ensure the air inlet is free from obstruction.

4.2.15 Always ensure your hands are dry before handling and operating the heater.

4.2.16 The heater must only be operated by responsible adults, at all times.

## **OPERATING INSTRUCTIONS**

5.1 Position the fan heater so that it stands upright on a firm surface and at a safe distance from wet environments and flammable objects.

5.2 Connect the fan heater to the mains power supply.

5.3 Set the thermostat dial to the maximum temperature.

5.4 The fan heater will switch on when the function selector is set to the ON position.

5.5 Once the room reaches the required temperature, heating element will drop out, however the fan will continuously run.

5.6 The heating elements now start and stop automatically and thus keep the room temperature constant.

5.7 Before unplugging the heater, turn the thermostat to the OFF position and allow the heater to operate on FAN ONLY setting for two minutes to cool the heater down

5.8 Once cooled, turn off the heater and unplug from the mains power.

## **CLEANING AND MAINTENENCE**

6.1 Before cleaning the heater, disconnect it from the mains supply and let it cool down. Keep the heater enclosure clean by wiping with a soft sponge. Always ensure water doesn't enter the heater or switch panel. Never use solvents like gasoline, isoamyl, acetate, toluene or others to clean the heater.

6.2 When not in use, keep the heater in the original box, in a well ventilated place.

## **TROUBLESHOOTING**

Please see below a list of troubleshooting tips, if you have any questions please call our service department.

Problem	Possible cause	Treatment
The heater does not operate,even when it is plugged in and the switch,thermostat are switched on .	The plug is loose,bad connection	Pull out the plug, check the connection of the plug and socket. Then connect again.
	No power in socket outlet	Insert the plug in a proper socket
The heating element glowing	The input voltage is too high or too low	Use proper supply according to the rating on the label
	The air inlet grill is blocked	Keep the heater far way from articles like curtain,plastic bag, paper and other things which can cover the inlet or can be easily cover on the air inlet

The appliance didn't heat up, only ventilator worked	The switch was not put at heating setting	Turn the switch to heat setting
	The thermostat operated	Turn the thermostat and listen if there is open/close voice. If there is no click and the thermostat is not damaged, the heater will automatic switch on when the appliance cooled down
Abnormal noise	The appliance is not stands upright	Put the heater on a level surface

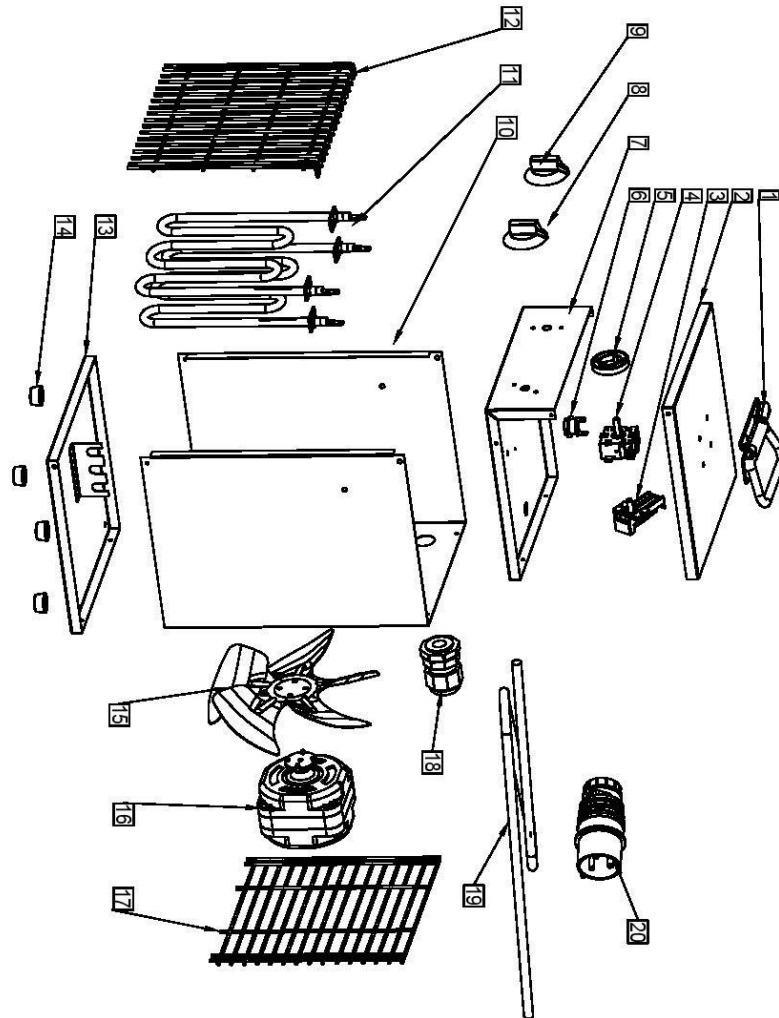
## **DISPOSAL**



### Environmental Protection

Waste electrical production should not be disposed of with household waste. Please recycle responsibly. Check with your Local Authority or retailer for recycling advice

# Heater Exploded View Diagram



JFH2 Spare Parts List		
Part Number	Code	Description
1	03012600	Handle
2	03014705	Lid
3	07051002	Thermostat
4	07021004	Switch
5	06010020	Bezel
6	07052005	Over temp stat
7	05014803	Electric Housing
8	05010028	On/Off Switch
9	06010030	Thermostat Knob
10	05008506	Outer Box
11	07111025	Element
12	05008005	Front Grill
13	05008206	Bottom Panel
14	05010055	Fan Blade
15	05015000	Motor
16	07012008	Back Grill
17	03008505	Gland
18	07090111	Mains Cable
19	07050009	16A 110v plug
20		

Heater Wiring Diagram

